

1. Agenda

Documents:

[2025_02_04_BAR_AGENDA.PDF](#)

2. Meeting Materials

Documents:

[2025_AR_01_384 COLLEGE AVE UNIT 5_RENDERING V2.PDF](#)



CITY OF
Clemson
PLANNING &
DEVELOPMENT

AGENDA
Board of Architectural Review Meeting
February 4, 2025 at 6:00 P.M.
1250 Tiger Blvd.
City Hall - City Council Chambers

You can also view these meetings on the City of Clemson's YouTube channel.

How to Submit Public Comments

1. In-person during appropriate portions of meetings
2. On the City's MyCivic web platform no later than 5:00 p.m. the day before the meeting

1. Call to Order

2. Election of Officers

3. Adoption of Minutes – December 3, 2024

4. Action Items

a. Building and Site Review

- 1) 2025-AR-01: Applicant Chris Craft, Signsouth, is requesting approval of new signage at 384 College Ave Suite 5. (SIGN-000390-2025)

Please note that Public Comments will be heard during each of the Action Items presentation.

5. Staff Reports

6. Other Business

a. Board recommendation to Council regarding the role of the BAR during Planned Development review.

7. Adjourn

STORE SIGNAGE: PHOTO RENDERING (STREET SIDE)



15' - 10" ELEVATION

48' - 0" STOREFRONT

RALLY HOUSE

APPROVAL

SIGNATURE: _____
DATE: _____

- remove existing sign
- install (1) set of remote face lit channel letters



RALLY HOUSE

LOCATION: 384 College Ave
Clemson, SC 29631

SCALE: as noted
FILE: RH_Clemson_SC_sign package_R3

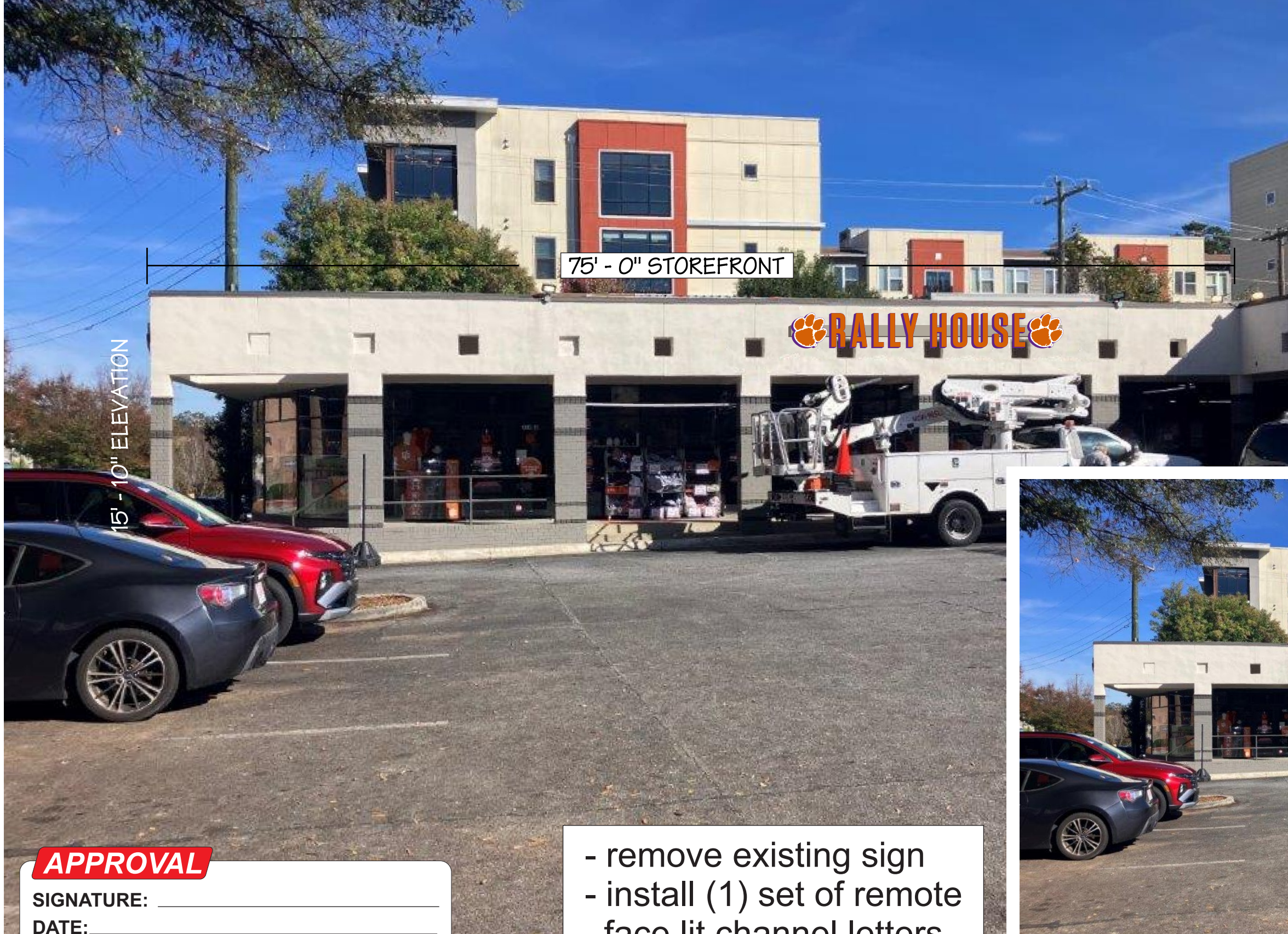
PG: 1 of 4
DRAWN BY: nm

DATE: 11/19/24
01/09/25
01/10/25
01/16/25

215-827-6500 • 215-827-6501 fax
barryj@formansign.com
©2007 forman sign company. All rights reserved. No part of this document or the related files may be reproduced or transmitted in any form, by any means (electronic, copying, or otherwise) without the prior written permission of forman sign company.

formansigns
10447 Drummond Rd, Philadelphia, PA 19154

STORE SIGNAGE: PHOTO RENDERING (PARKING LOT)



APPROVAL

SIGNATURE: _____

DATE: _____

- remove existing sign
- install (1) set of remote face lit channel letters

RALLY HOUSE

LOCATION: 384 College Ave
Clemson, SC 29631

SCALE: as noted
FILE: RH_Clemson_SC_sign package_R3

PG: 2 of 4
DRAWN BY: nm

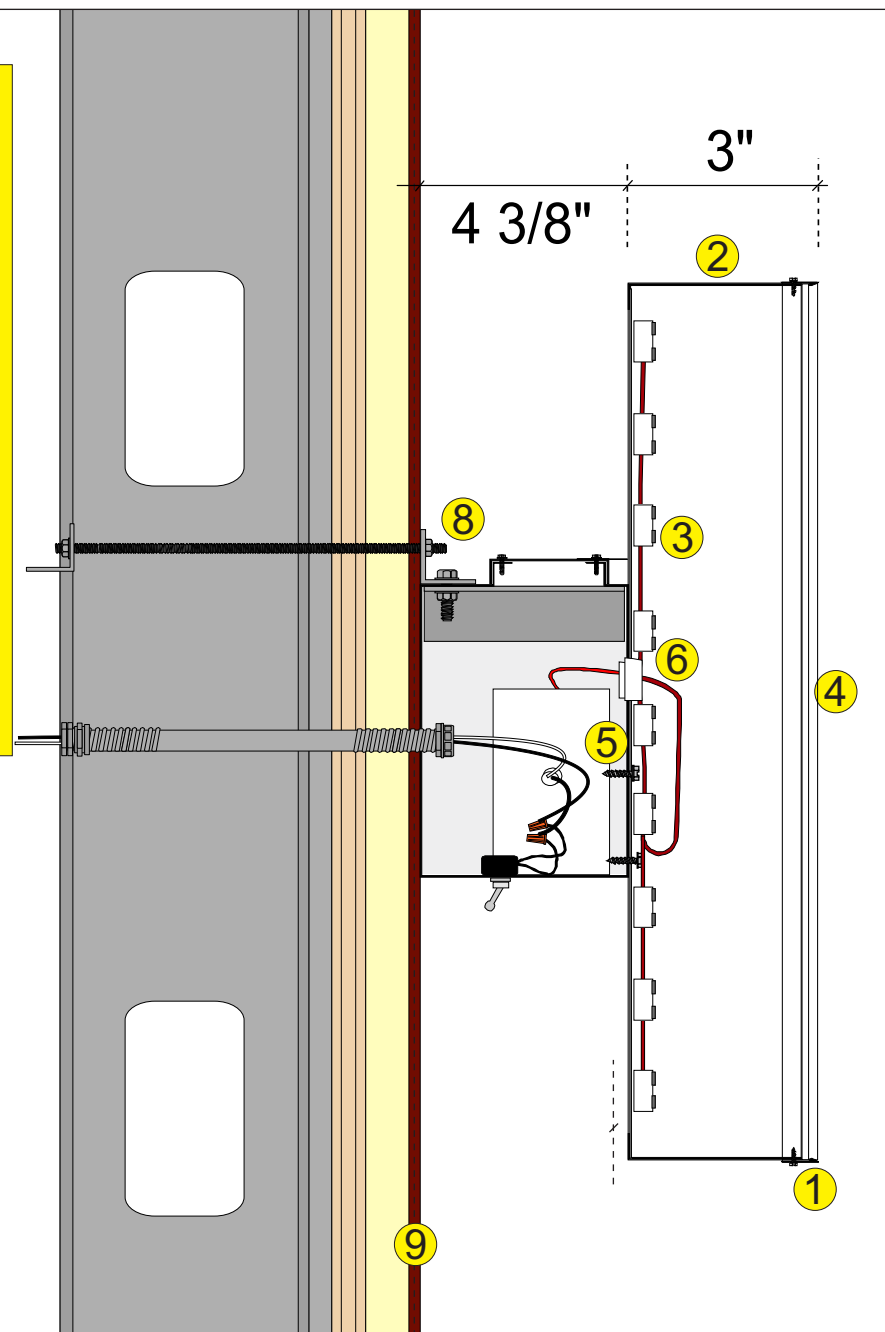
DATE: 11/19/24
01/09/25
01/10/25
01/16/25

215-827-6500 • 215-827-6501 fax
barryj@formansign.com
©2007 forman sign company. All rights reserved. No part of this document or the related files may be reproduced or transmitted in any form, by any means (electronic, copying, or otherwise) without the prior written permission of forman sign company.

formansigns
10447 Drummond Rd, Philadelphia, PA 19154

STORE SIGNAGE: DETAIL VIEW

- 1) Trim Cap -REGALIA PMS 268c
w/ Sheet-metal Screw Painted to Match Trim Cap
- 2) Case (w/ 1/4" weepholes) - REGALIA PMS 268c
- 3) LEDs - WHITE
w/ Class II low voltage wiring
- 4) Face- 3/16" Acrylic - WHITE w/ Vinyl Overlay
to Match CLEMSON ORANGE PMS 1595C
- 5) Galv. #10 Hex-head Sheet-metal Screw
- 6) Porcelain Bushing
- 7) Narrow Raceway w/ Power Supply w/ Cut-off Switch
for Primary Service - **COLOR TBD**
- 8) Primed & Painted Angle-iron Clips Attached
to Raceway w/ Galv 3/8" Bolts; w/ 3/8" Galv
Threaded Rod Thru Bolts to Internal Metal Angle
"Sleepers" Spanning Metal studs
- 9) Wall -



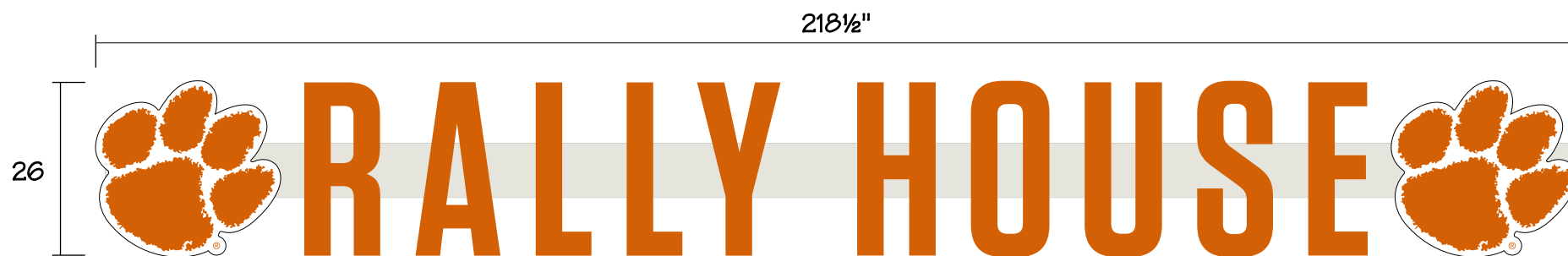
APPROVAL

SIGNATURE: _____

DATE: _____

Allowed per code: 40sf

Proposed: 26" x 218.5" = 39.45sf



DETAIL VIEW
SCALE: 1/2" = 1'-0"

RALLY HOUSE

LOCATION: 384 College Ave
Clemson, SC 29631

SCALE: 1/2" = 1'-0"
FILE: RH_Clemson_SC_sign package_R3

PG: 3 of 4
DRAWN BY: nm

DATE: 11/19/24
01/09/25
01/10/25
01/16/25

215-827-6500 • 215-827-6501 fax
barryj@formansign.com
©2007 forman sign company. All rights reserved. No part of this document or the related files may be reproduced or transmitted in any form, by any means (electronic, copying, or otherwise) without the prior written permission of forman sign company.

formansigns
10447 Drummond Rd, Philadelphia, PA 19154

STORE SIGNAGE: MONUMENT PANELS (2)

- remove existing sign
- install (2) 3mm ACM panels w/ orange vinyl graphics



APPROVAL

SIGNATURE: _____
DATE: _____

44" cut size

26 1/2" cut size

RALLY HOUSE

DETAIL VIEW
SCALE: 1" = 0"

RALLY HOUSE

LOCATION: 384 College Ave
Clemson, SC 29631

SCALE: as noted
FILE: RH_Clemson_SC_sign package_R3

PG: 4 of 4
DRAWN BY: nm

DATE: 11/19/24
01/09/25
01/10/25
01/16/25

215-827-6500 • 215-827-6501 fax
barryj@formansign.com
©2007 forman sign company. All rights reserved. No part of this document or the related files may be reproduced or transmitted in any form, by any means (electronic, copying, or otherwise) without the prior written permission of forman sign company.

formansigns
10447 Drummond Rd, Philadelphia, PA 19154